

# TABLE OF CONTENTS



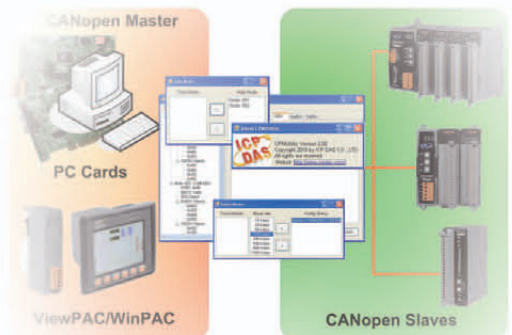
## CAN Series

<b>CAN Series Overview.....</b>	<b>1-01</b>
<b>CAN bus Converter&amp;Repeater</b>	
I-7530 .....	1-03
I-7530A-MR .....	1-05
I-7530A .....	1-07
I-7530-FT .....	1-09
I-7531 .....	1-11
I-7532 .....	1-13
I-2534 .....	1-15
I-7540D .....	1-17
I-7540D-WF .....	1-19
I-2532 .....	1-21
I-2533 .....	1-23
I-7565 .....	1-25
I-7565-H1 .....	1-27
I-7565-H2 .....	1-29
<b>CAN bus PAC</b>	
I-7188XBD-CAN .....	1-31
μPAC-7186EXD-CAN .....	1-33
<b>CAN bus Module</b>	
I-87120 .....	1-35
I-8120W .....	1-37
<b>CAN bus Board</b>	
PEX-CAN200i .....	1-39
PISO-CAN200U .....	1-41
PISO-CAN400U .....	1-43
PCM-CAN100 .....	1-45
PCM-CAN200/CAN200P .....	1-47
PISO-CM100U .....	1-49
<b>CAN bus Software</b>	
RTX CAN Driver .....	1-51
LabVIEW CAN Driver .....	1-52
DASYLab CAN Driver .....	1-53
SocketCAN Device Driver .....	1-54
PISOCANX ActiveX Object .....	1-55
NAPOPC.CAN DA Server .....	1-56

# CANopen Series

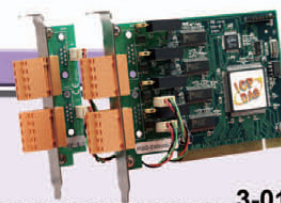


<b>CANopen Series Overview.....</b>	<b>2-01</b>
<b>CANopen Gateway</b>	
I-7231D .....	2-03
I-7232D .....	2-05
GW-7433D .....	2-07
<b>CANopen Module</b>	
I-7565-CPM .....	2-09
I-87123 .....	2-11
I-8123W .....	2-13
<b>CANopen Board</b>	
PISO-CPM100U .....	2-15
<b>CANopen Remote I/O Unit</b>	
CAN-8123/8223 .....	2-17
CAN-8423 .....	2-19
<b>CANopen Remote I/O Module</b>	
CAN-2053C .....	2-21
CAN-2057C .....	2-23
CAN-2054C .....	2-25
CAN-2015C .....	2-27
CAN-2017C .....	2-29
CAN-2018C .....	2-31
CAN-2024C .....	2-33
CAN-2088C .....	2-35
<b>CANopen Software</b>	
Compact CANopen Library .....	2-37
CANopen Master Utility .....	2-38
CANopen Master InduSoft Driver .....	2-39
CANopen Master LabVIEW Driver .....	2-40



# TABLE OF CONTENTS

## DeviceNet Series



<b>DeviceNet Series Overview</b> .....	<b>3-01</b>
<b>DeviceNet Gateway</b>	
I-7241D .....	3-03
I-7242D .....	3-05
GW-7243D .....	3-07
GW-7434D .....	3-09
<b>DeviceNet Module</b>	
I-7565-DNM .....	3-11
I-87124 .....	3-13
I-8124W .....	3-15
<b>DeviceNet Board</b>	
PISO-DNM100U .....	3-17
PISO-DNS100U .....	3-19
<b>DeviceNet Remote I/O Unit</b>	
CAN-8124/8224 .....	3-21
CAN-8424 .....	3-23
<b>DeviceNet Remote I/O Module</b>	
CAN-2053D .....	3-25
CAN-2057D .....	3-27
CAN-2054D .....	3-29
CAN-2015D .....	3-31
CAN-2017D .....	3-33
CAN-2018D .....	3-35
CAN-2024D .....	3-37
CAN-2088D .....	3-39
<b>DeviceNet Software</b>	
Compact DeviceNet Library .....	3-41
DeviceNet Master Utility .....	3-42
DeviceNet Master InduSoft Driver .....	3-43
DeviceNet Master LabVIEW Driver .....	3-44

# J1939 Series



**J1939 Series Overview** ..... 4-01

**J1939 Gateway**

GW-7228 ..... 4-03

GW-7238 ..... 4-05

